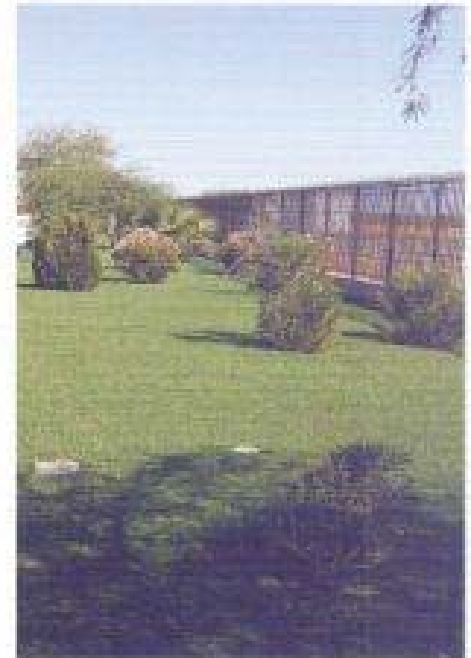


Synthetic turf using waste tires / saving water & energy



The Arizona CRM plant, a major supplier of crumb rubber for synthetic turf, installed 28,000 square feet of the material around its building and parking lot. The project used 8400 tires and eliminates landscape maintenance and watering costs as well as cutting the desert dust. Photo by Terry Eitel



Trees, flower beds and ornamental bushes can easily be combined with synthetic turf as shown in this view of the south side of our Arizona facility parking lot.

Environmental benefits multiplied when grass is replaced

- Eases the nation's drought by conserving millions of gallons of water
- Cuts maintenance costs by eliminating mowing, fertilizing and weeds
- Retains a fresh, lush-green appearance year after year
- Recycles millions of waste tires through crumb rubber infill
- Each square foot uses three pounds of crumb rubber mixed with three pounds of sand for infill
- Safe, inviting surfaces for sports fields and playgrounds



Michie Stadium at the U.S. Army Academy in West Point, NY used 28,000 waste tires in the infill for this famous football field. The cryogenic rubber was supplied by the CRM New York plant. Photo courtesy of Army Football QBs



This KinderCare facility in Surprise, Arizona provides a safe surface for children to play on without requiring harmful chemical fertilizers and pesticides. Photo courtesy of Legacy Turf



Comments from our customers

CRM prides itself in customer service, not just for those who buy product from us, but also the counties we contract with to haul and recycle their waste tires. Listed below are a few comments we have received that keep us focused on our commitment to quality customer service and partnerships with our suppliers.

Yavapai County: Paul Sween, Waste Tire Manager

"Yavapai is in its third year of doing business with CRM. In all that time, I must say it has been a joy to work with the CRM staff. Their service and response to questions have been excellent. I remember one time an issue came up over dispatch and scheduling tire pickup. Within two hours, a CRM representative was on site and he quickly and fairly resolved all issues. I look forward to a long and pleasant relationship with CRM."



Representative Ray Barnes: Chairman, Committee on Environment Arizona House of Representatives



"No law is perfect, but in terms of legislative intent we need a long lasting recycled tire solution. It is extremely difficult to legislate environmental cleansing. We have made many mistakes enacting a particular technology for five years in the future that hasn't been totally proven. Solar Energy is a good example. We jumped on board before adequate technology existed.

"However, Arizona has one of the best working tire programs in the United States. This is due to the fact that the tire fees go to the counties to establish waste tire collection sites and set up programs to have their tires recycled. CRM has a long term contract with Maricopa County (the state's largest generator) to recycle waste tires. Arizona had its share of problems with tire piles and fires. Having learned from past mistakes, more than half of our counties, representing over 90% of the states tires, are using a proven technology by CRM to recycle the old tires for use; in our roads, the water saving synthetic turf applications and other beneficial uses. We are still dealing with some problems that developed during the "learning curve" but five years from now, I firmly believe we'll still be using first class recycling plants like CRM, with even five years more technology development, to stabilize our waste tire problems."



Photo courtesy of Legacy True Turf

Payson, Arizona



This inviting, green backyard putting green uses artificial grass from Legacy True Turf. Photo courtesy of Legacy True Turf

David Gille: President – Legacy True Turf

"Quality crumb rubber is an important component of our installations. The rubber infill serves a variety of functions. Mixed with the silica sand, it holds up the "grass blades" for a luxurious appearance. It also helps the turf drain and breathe, preventing mold, mildew and rotting. The crumb infill gives the product a good cushion which helps prevent injuries. We are assured that we get a quality product to meet our high standards from CRM."



www.legacytrueturf.com

CALIFORNIA TIRE REPORT

TIMELY UPDATES OF WASTE TIRE RECYCLING ISSUES AND EVENTS

Terry Leveille, Editor – California Tire Report

"While California generates more than 40 million scrap tires annually, there are only a few companies that produce crumb rubber. CRM is California's key supplier of crumb rubber for the state's asphalt rubber markets. They have been the industry leader since 1988."

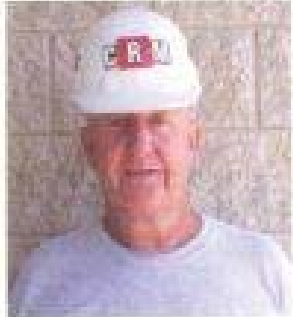
Michael Hoag – Granite Palm Springs, CA President of Rubber Pavements Association

"Granite Construction Company has a long history of producing asphalt-rubber in the southwest and we have developed a great working relationship with CRM. Barry Takallou has become a valuable resource to all asphalt-rubber producers because he is dedicated to providing a quality product that ultimately benefits the agencies that select asphalt-rubber to improve their infrastructure. CRM has also shown tremendous responsiveness to our purchasing needs that can fluctuate greatly from day to day. I respect Dr. Takallou and the company he has created and know that Granite and CRM will continue a strong partnership for many years to come."



Don Murphy – CRM Safety Director, MVP

Without sound safety programs and practices, manufacturing crumb rubber from waste tires can be a risky business. Fire is one of the dangers feared by owners as well as surrounding businesses. In the past decade several



major tire recycling plants throughout the U.S. have been put out of business due to fires leaving customers without a convenient source of crumb rubber. With three plants, located in Arizona, California and New York, CRM puts safety as the number one priority. To make sure the safety program had the best leadership and expertise available, CRM hired

Don Murphy, retired City of Mesa Fire Inspector to serve as the Safety Director for its three plants.

Don brings a wide range of experience to CRM in this role. He started his professional career in the U.S. Navy SeaBees. After his Navy career he worked briefly as a Union Carpenter in Poughkeepsie, NY. In 1976 he joined the U.S.

Army Reserve Engineers as an instructor, a position he held in conjunction with serving as Building Inspector for the City of Poughkeepsie. In 1989 he became the Town Fire Marshall, until 1994 when he moved to Fishkill, NY as their Building Inspector. In 1995, Don and his family moved west to Mesa, Arizona to serve as City Building Inspector until he was promoted to City Fire Inspector, a position he held until his retirement in 2005.

Don's professional qualification training includes over 200 hours in Building and Fire Disciplines. He holds Certifications in Building Inspector, National Academy of Code Administration, Fire Inspector NFPA, Joint Council of National Fire Service, Fire Inspector, International Conference of Building Officials, NFPA Fire Inspector/Plans Examiner and the National Fire Academy.

Don says his philosophy has always been directed toward pro-action, not reaction. "This is Dr. Takallou's mind set too. Hands on safety training is essential to fire and life safety." For strict adherence to the rules Don often rewards the CRM crews at the three plants with his famous "fire house" cooking.

New Jersey joins the move to Quieter, Safer Asphalt Rubber Pavements

In 2002 the New Jersey DOT Supervising Engineer in Surface Design, Bob Sauber, watched the construction of a \$19 million Asphalt-Rubber resurfacing project on North and southbound Route 95 from Scotch Road in interchange B (Route 1) According to Sauber, the project was such a success that the Department decided to award three projects for this year with the Asphalt Rubber Open Graded Friction Course (AR OGFC).

In an official press release NJDOT Commissioner Kolluri said the use of the recycled tire Asphalt mix on Route 95 reflects the department's commitment to maintain a safe and environmentally friendly roadway network. The rubber asphalt on the Route 95 project utilized approx 80,000 recycled tires supplied by the CRM plant in Albany. The Department said the AR OGFC was chosen because of its excellent durability, skid resistance, ride quality, noise reduction and improved visibility.

The 3 projects that have been awarded this construction season will also utilize the 1" AR OGFC overlay. The projects are located on the I-280 in Essex County between MP 6 and MP 13 of the multilane interstate, 100 lane miles of a 1 inch AR OGFC over old asphalt on a section of I-78. The second project on the I-78 will resurface an old concrete pavement with the Asphalt-Rubber material. Of the projects awarded, it is estimated that 3.5 million pounds of crumb rubber will be



New Jersey's initial asphalt-rubber pavement project was so successful that the state's DOT commissioned three more asphalt-rubber projects for 2008.

required. According to Sauber, several more projects are in the works for the next construction season.

Hats off to Rubber Pavement Member Diane Graham, CEO of Strato/Scopath for making the blending equipment available to Trapp Rock Industries, Prime Contractor on the Route 95 project.

CRM of America ARIZONA



Bags of cryogenic rubber await shipment to a synthetic turf project

Second Plant on the drawing board

CRM of America opened the Arizona plant in 2003 under contract with Maricopa County, the largest of the state's 15 counties to recycle waste tires. In 2005 the company started bidding for contracts with other counties. Today it is under contract with 8 of the 15 counties and is producing crumb rubber from over 90% of the state's waste tires. Due to increased demand, the eastern Maricopa County plant has installed a second cryogenic line to boost production for the synthetic turf industry. Maricopa County which occupies 9224 sq. miles of land and has 60% of the state's population, is working in partnership with CRM to establish a second plant in the fast growing western portion of the county to facilitate a shorter haul time for the tire generators. The new plant will also reduce transportation costs for all the western Arizona counties.

Corporate Office, CRM

New plant construction and expansions required additional office space for corporate functions. In January 2008 the Mission Viejo, California office was opened to house the executive functions



of CRM's three plants. Dr. Barry Takalou, President and CEO can be reached at the corporate office (949) 582-7500. Photo courtesy of Anne Holland CRM

CRM Co. CALIFORNIA

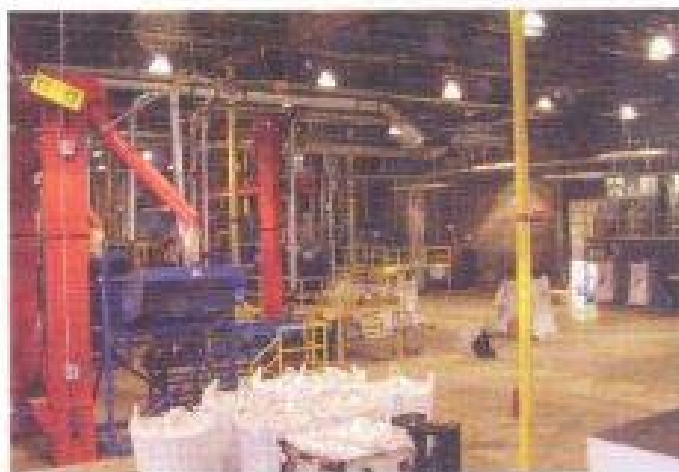
Increases production capacity

Dr. Barry Takalou recently announced the upgrading and expansion of the shredding department in the Los Angeles plant. Since the plant reconfiguration with new equipment added, crumb rubber production has increased by 21 percent. Photo courtesy of Anne Holland, CRM



CRM of New York

Serving the synthetic turf industry on the east coast



CRM of New York, opened in August 2006, has gone from an empty warehouse to a state-of-the-art crumb rubber manufacturing plant that is supplying infill for sports facilities all over the eastern part of the United States. In the first six months of 2008 the plant supplied cryogenic crumb rubber for 100 synthetic turf projects ranging from parks, high schools and colleges to major universities including Yale, Cornell, Notre Dame, Princeton, West Point and the New York Athletic Club.

CRM Plant Locations, USA

Arizona/Phoenix

11400 E. Pecos Road
Mesa, Arizona 85212
USA

Phone (480) 987-3006

Fax (480) 987-0965

California/Los Angeles

15800 S. Avalon Blvd.
Rancho Dominguez, CA 90220
USA

Phone (310) 538-2222

Fax (310) 538-2227

New York/Colonie

4294 Albany Street
Colonie, NY 12205
USA

Phone (518) 869-6000

Fax (518) 869-6160

Corporate Office

28891 Plaza, Suite 105
Mission Viejo, CA 92691
USA

Phone: (949) 582-7500

Fax: (949) 582-6900

Please direct
all inquiries to:
Donna Carlson

donnac@crmrubber.com